



Brindley Crescent | Cannock | WS12 4DT

£995 PCM

 **Webbs**
estate agents

Summary

Webbs Estate Agents are pleased to offer this spacious and immaculately presented mid terraced house situated in a quiet cul-de-sac on the edge of Cannock Chase.

Finished to a high standard, this beautiful home is just a short commute to Hednesford town centre, local amenities and both train & bus stations, providing excellent public transport links.

In brief, the accommodation comprises of; hall, lounge, spacious and contemporary kitchen/diner, utility area, three generous bedrooms and modern family bathroom.

Externally there is a driveway to the front and enclosed well maintained garden to the rear.

Key Features

Rooms and Dimensions

PROPERTY DETAILS

Entrance Hallway

4'5" x 5'8" (1.37 x 1.75)

Living Room

12'5" x 9'4" (3.79 x 2.86)

Kitchen/Diner

17'3" x 10'0" (5.27 x 3.05)

Side Access /Utility Area

3'0" x 19'6" (0.92 x 5.96)

Landing

7'10" x 2'9" (2.40 x 0.84)

Bedroom

13'1" x 9'3" (3.99 x 2.82)

Bedroom

9'8" x 10'0" (2.96 x 3.05)

Bedroom

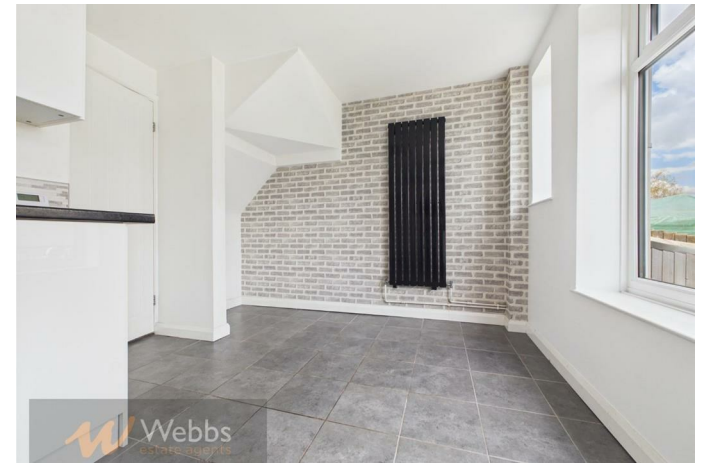
7'1" x 10'11" (2.17 x 3.35)

Bathroom

8'5" x 5'3" (2.57 x 1.62)

TENANCY INFORMATION & IMPORTANT NOTES







Webbs Estate Agents - endeavour to maintain accurate depictions of properties in Virtual Tours, Floor Plans and descriptions, however, these are intended only as a guide and purchasers must satisfy themselves by personal inspection.

